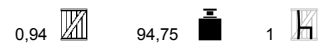
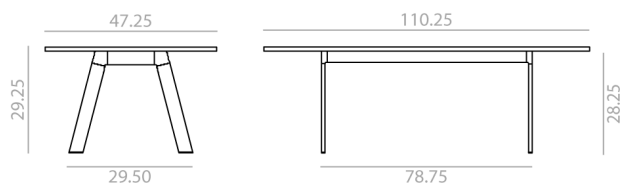
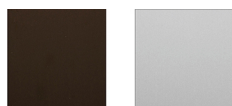


Table with straight edge profile laminate board table top and matching thermo-polymer edge and aluminum legs.



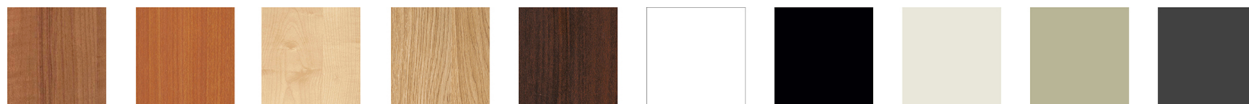
### Aluminum finish



EPXM  
Anodized  
Brown

EPXP  
Anodized  
Silver

### Laminated



L202  
Walnut

L203  
Cherry

L204  
Maple

L205  
Oak

L206  
Dark Walnut

L200  
White

L201  
Black

L300  
Sand

L302  
Basalt Grey

L301  
Dark Grey

### Resistance and Quality

ISO 9001:2008

### Sustainability

ISO 14001:2004

ISO 14006:2011

level 1 ANSI/BIFMA